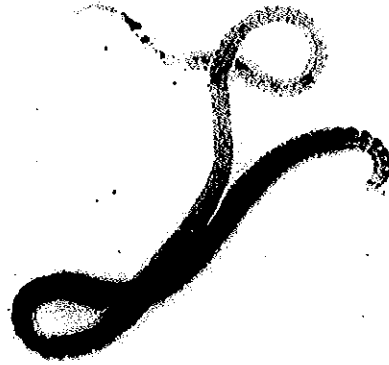


Macroinvertebrates That Are Tolerant of Pollution

Found in Any Quality Water



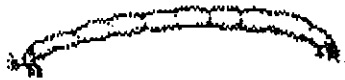
Aquatic Worm



Aquatic Worm Adult



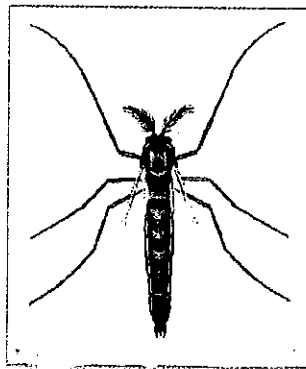
Black Fly



Midge Fly



Black Fly Adult



Midge Fly Adult



Lunged Snail



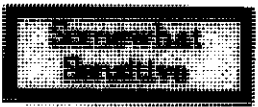
Lunged snail adult



Leech

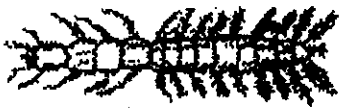


Leech Adult

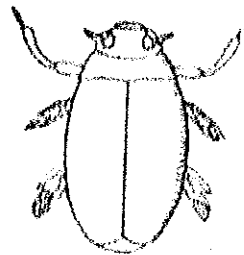


Macroinvertebrates That Are Somewhat Sensitive to Pollution

Found in Good or Fair Quality Water



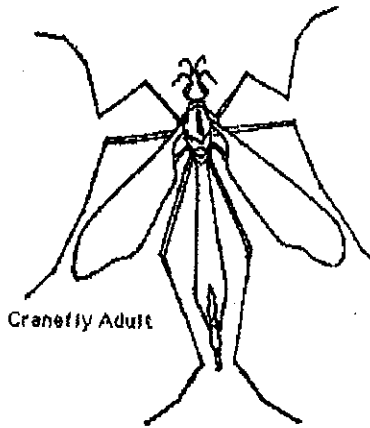
Whirligig Beetle Larva



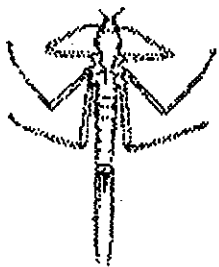
Whirligig Beetle Adult



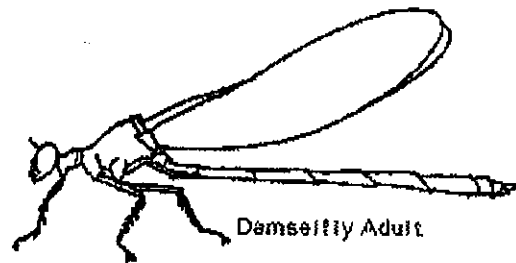
Crane Fly



Crane Fly Adult



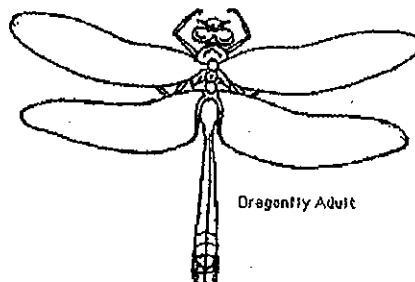
Damselfly



Damselfly Adult



Dragonfly



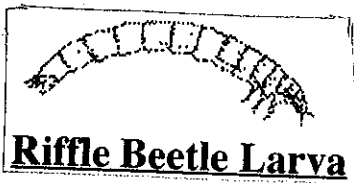
Dragonfly Adult



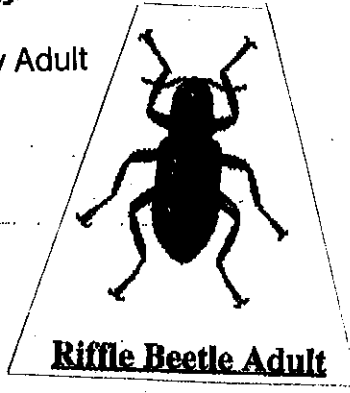
Alderfly



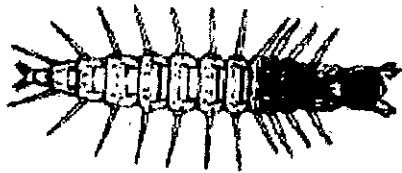
Alderfly Adult



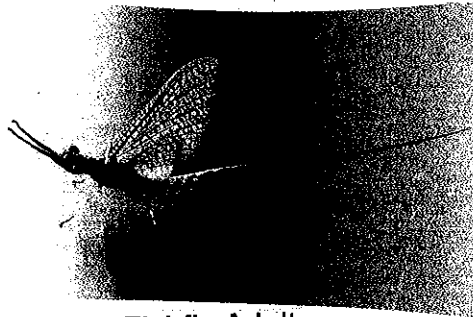
Riffle Beetle Larva



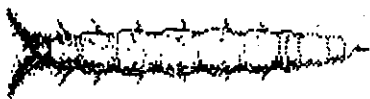
Riffle Beetle Adult



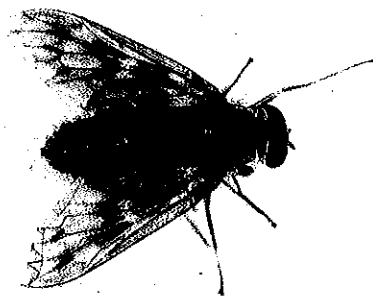
Fishfly



Fishfly Adult



Watersnipe Fly



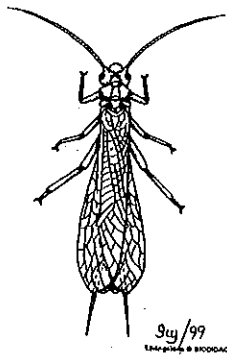
Watersnipe Fly Adult

Macroinvertebrates That Are Sensitive to Pollution

Found in Good Quality Water



Stonefly



Stonefly adult



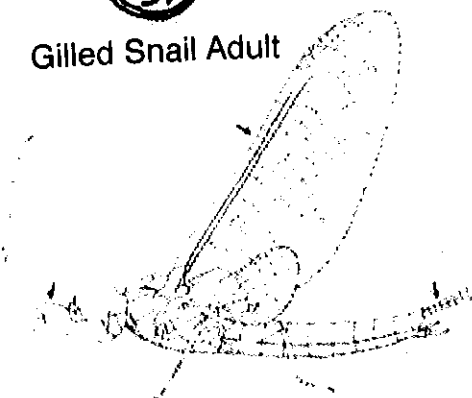
Gilled Snail



Gilled Snail Adult



Mayfly



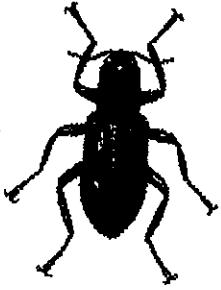
Mayfly Adult



Caddisfly



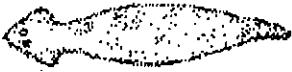
adult caddis fly



Riffle Beetle Adult



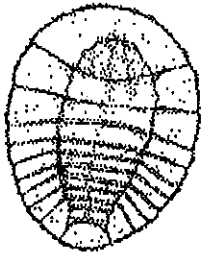
riffle beetle larvae



Planarian



Planarian Adult



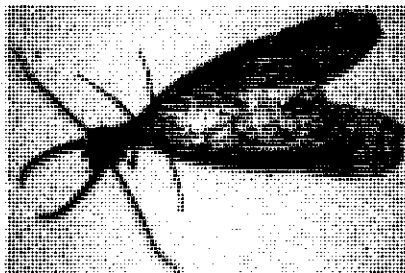
Water Penny



Water Penny Adult



Hellgramite



Hellgramite Adult